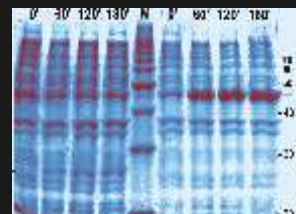


EloCheck

Continuous
recording of
optical density



Ultimate control of bacterial fermentation

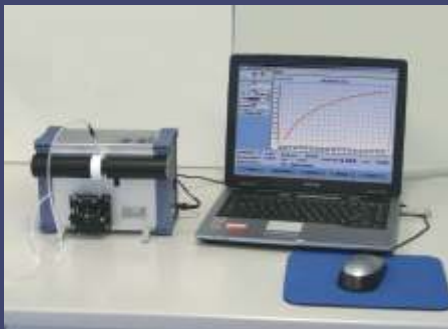
 biotronix

Continuous optical analysis of cell suspension

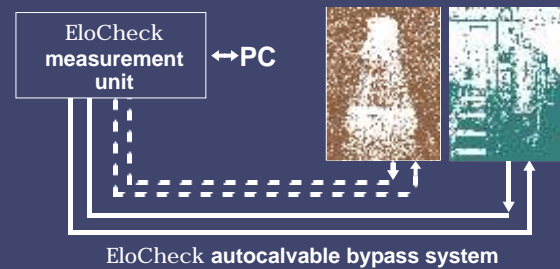
EloCheck is an automatic bypass-photometer for continuous analysis of cell suspensions and chemical solutions. The EloCheck measurement unit provides various ways of measuring, storing, viewing comparing and exporting optical data. With the integrated alarm function you will never miss the right time points for induction or harvest. Convenient comparison with previous fermentation allows a user-friendly control of reproducibility and optimal improvement of the yield quality.

Advantages of EloCheck

- Fast and ultra-high precision measurement of optical density
- Continuous recording via autoclavable bypass system
- Course of beam, wavelength and full glass cuvette optimized for cell suspensions
- Acoustic and optical alarm at adjustable optical densities
- Easy and secure handling, calibration and autoclavation
- Direct calibration of free definable units (like CFU, g/l, NTU, off-line laboratory OD, ...) via flexible polynomic functions
- Data export to ASCII (Excel etc.)
- Automatic report generator
- Maintenance-free LED technology, no warm-up time required
- Robust and highly stable

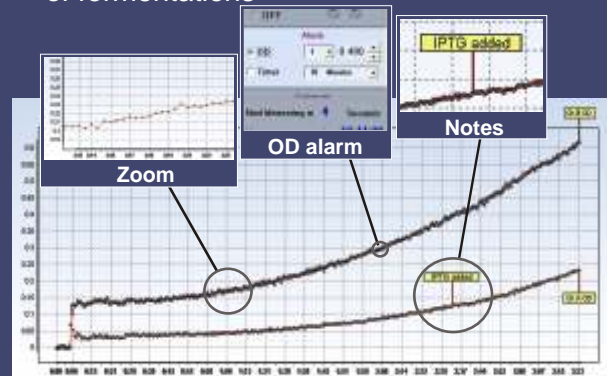


Flexible Bypass-System



Areas of application

- Multiple fermentation strategies like protein expression, production of plasmids, competent cells, vaccines, high density cultivation
- Process safety and reliability
- Quality assurance and process validation of fermentations



biotronix GmbH
Neuendorfstr. 24a
16761 Hennigsdorf
Germany

Tel.: (+49) 03302 202 1800
Fax.: (+49) 03302 202 1801
Email: info@biotronix.de
Web: www.biotronix.de